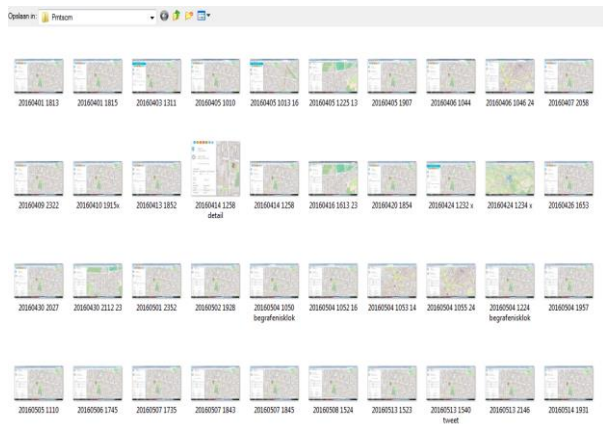
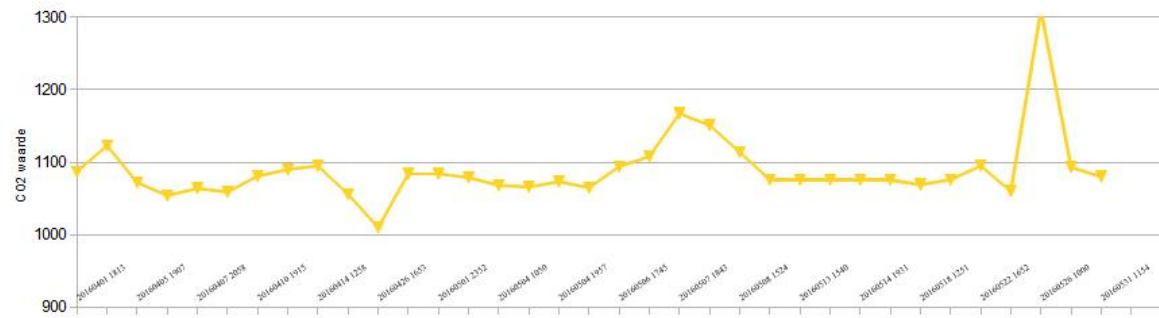
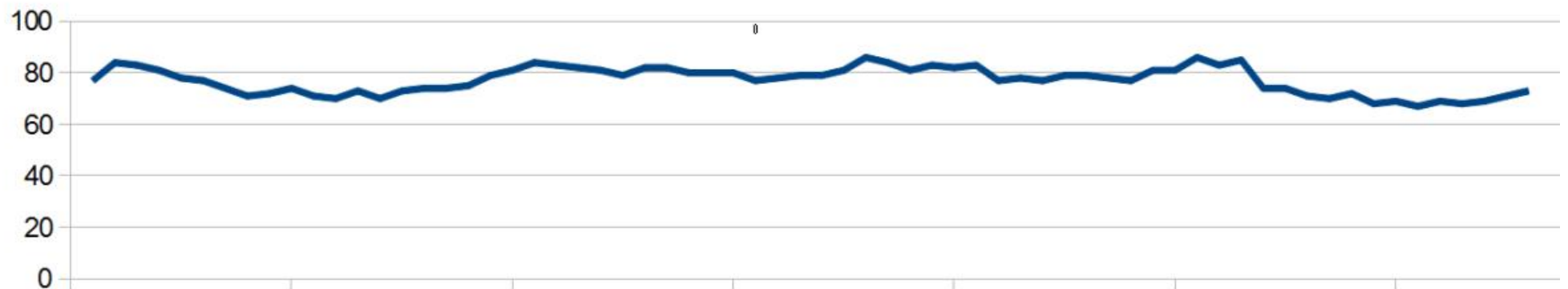
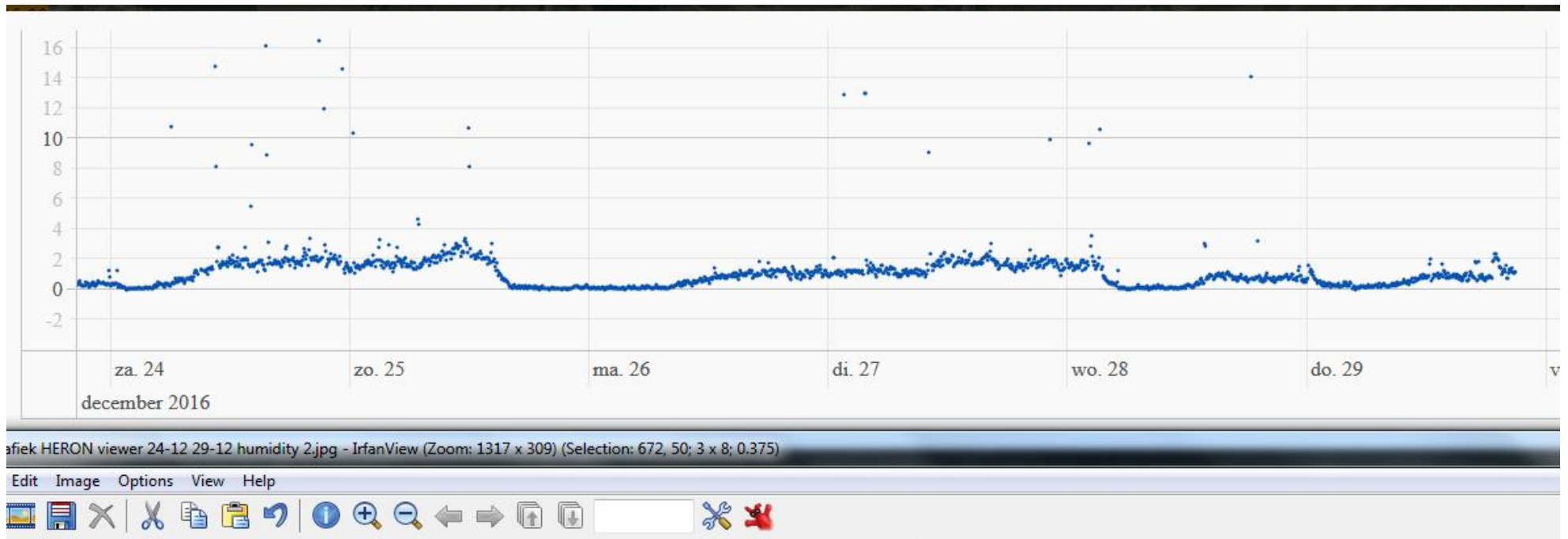


	A	B	C	D	E	F	G	H	I	J	K	L	M	N	O	P	Q
1	Moment		Weergegeven		CO2												
2	consultatie		meting		waarde	opmerkingen											
3	app																
4	20160401 1813	201604011813	20160401 1813	201604011813	1087												
5	20160405 1010	201604051010	20160405 1007	201604051007	1123												
6	20160405 1907	201604051907	20160405 1907	201604051907	1072												
7	20160406 1044	201604061044	20160406 1037	201604061037	1054												
8	20160407 2058	201604072058	20160407 2058	201604072058	1064												
9	20160409 2322	201604092322	20160409 2319	201604092319	1059												
10	20160410 1915	201604101915	20160225 0112	201602250112	1081	Tert											
11	20160413 1852	201604131852	20160413 1843	201604131843	1090												
12	20160414 1258	201604141258	20160414 1223	201604141223	1095												
13	20160420 1854	201604201854	20160420 1852	201604201852	1056												
14	20160426 1653	201604261653	20160426 1451	201604261451	1010												
15	20160430 2027	201604302027	20160430 1948	201604301948	1084												
16	20160501 2352	201605012352	20160501 2329	201605012329	1084												
17	20160502 1928	201605021928	20160502 1709	201605021709	1079												
18	20160504 1050	201605041050	20160504 0831	201605040831	1068												
19	20160504 1224	201605041224	20160504 0917	201605040917	1066												
20	20160504 1957	201605041957	20160504 1726	201605041726	1073												
21	20160505 1110	201605051110	20160505 0901	201605050901	1065												
22	20160506 1745	201605061745	20160506 1459	201605061459	1094												
23	20160507 1735	201605071735	20160507 1531	201605071531	1108												
24	20160507 1843	201605071843	20160507 1652	201605071652	1167												
25	20160507 1845	201605071845	20160507 1655	201605071655	1151												
26	20160508 1524	201605081524	20160508 1337	201605081337	1114												
27	20160513 1523	201605131523	20160512 0947	201605120947	1076												
28	20160513 1540	201605131540	20160512 0947	201605120947	1076												
29	20160513 2146	201605132146	20160512 0947	201605120947	1076												
30	20160514 1931	201605141931	20160512 0947	201605120947	1076												
31	20160515 2112	201605152112	20160512 0947	201605120947	1076												
32	20160518 1251	201605181251	20160518 1047	201605181047	1069												
33	20160519 1710	201605191710	20160519 1505	201605191505	1076												
34	20160522 1652	201605221652	20160522 1450	201605221450	1095												
35	20160524 1223	201605241223	20160524 1018	201605241018	1060												
36	20160526 1000	201605261000	20160526 0919	201605260919	1310	gras gemaaid											
37	20160526 1422	201605261422	20160526 1220	201605261220	1093												
38	20160531 1154	201605311154	20160531 1154	201605311154	1080												



Handmatig samengestelde Grafiek CO2 concentratie voorjaar 2016 sensor 18

Printscreen met gegevens => invoeren in excel  
Grafiek in excel realiseren



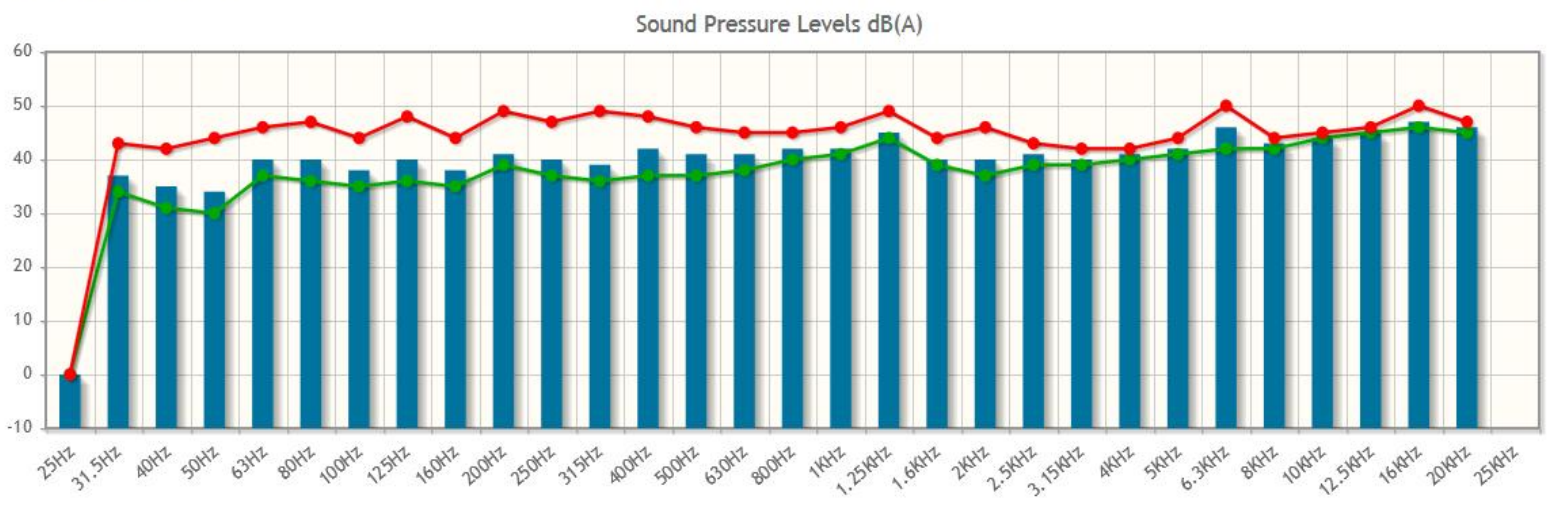
Fijnstof meting met ShinyeiPPD24 fijnstofsensoren van het RIVM vuurwerkproject en mogelijke relatie tot luchtvochtigheid (vergeleken met luchtvochtigheid uit HERON viewer van het smartemission project) **Let Op! Dit is niet meer dan een grove indicatie**

# Effect kerkklok op uurgemiddelde

Last History Sound Map Dashboard

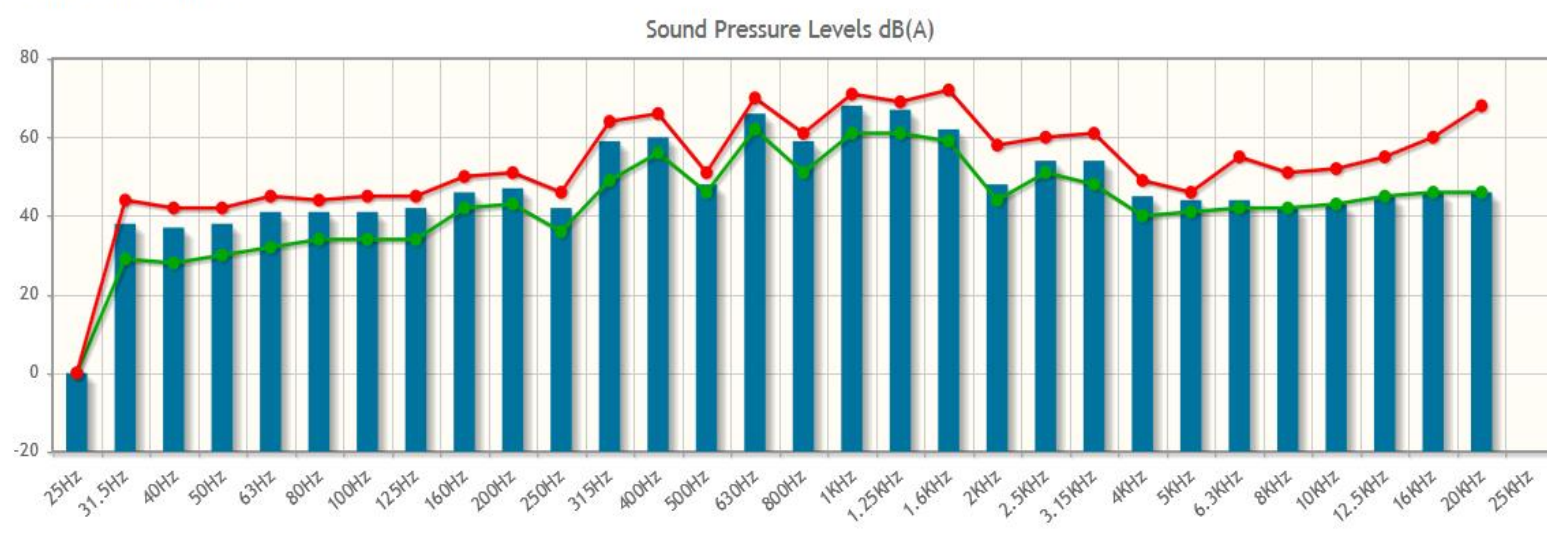
13-12-2016 11:37:51

normale  
situatie



13-12-2016 12:35:34

Moment  
opname  
kerkklok



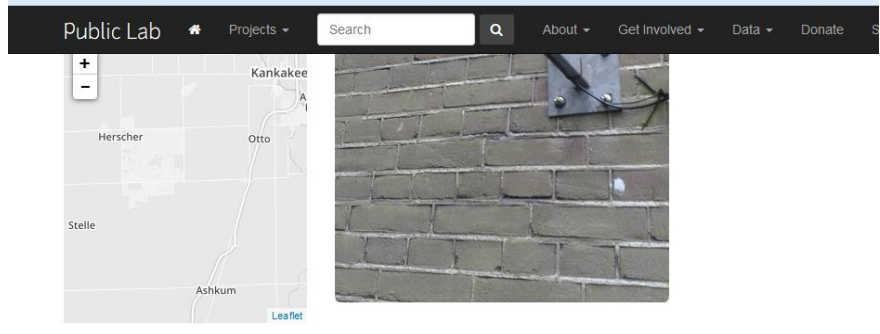


Device_id	Name	Label	Unit	Time	Day	Hour	Value_min	Value_max	Value
18	noiselevelavg	Average Noise Level 1-5	int	2016-12-13T00:00:00	20161...	23	2	2	40
18	noiselevelavg	Average Noise Level 1-5	int	2016-12-13T01:00:00	20161...	24	2	2	40
18	noiselevelavg	Average Noise Level 1-5	int	2016-12-13T02:00:00	20161...	1	2	2	40
18	noiselevelavg	Average Noise Level 1-5	int	2016-12-13T03:00:00	20161...	2	2	2	40
18	noiselevelavg	Average Noise Level 1-5	int	2016-12-13T04:00:00	20161...	3	2	2	40
18	noiselevelavg	Average Noise Level 1-5	int	2016-12-13T05:00:00	20161...	4	2	2	40
18	noiselevelavg	Average Noise Level 1-5	int	2016-12-13T06:00:00	20161...	5	2	2	40
18	noiselevelavg	Average Noise Level 1-5	int	2016-12-13T07:00:00	20161...	6	2	2	40
18	noiselevelavg	Average Noise Level 1-5	int	2016-12-13T08:00:00	20161...	7	2	2	40
18	noiselevelavg	Average Noise Level 1-5	int	2016-12-13T09:00:00	20161...	8	2	3	43
18	noiselevelavg	Average Noise Level 1-5	int	2016-12-13T10:00:00	20161...	9	2	2	40
18	noiselevelavg	Average Noise Level 1-5	int	2016-12-13T11:00:00	20161...	10	2	2	40
18	noiselevelavg	Average Noise Level 1-5	int	2016-12-13T12:00:00	20161...	11	2	3	45
18	noiselevelavg	Average Noise Level 1-5	int	2016-12-13T13:00:00	20161...	12	2	3	44
18	noiselevelavg	Average Noise Level 1-5	int	2016-12-13T14:00:00	20161...	13	2	2	40
18	noiselevelavg	Average Noise Level 1-5	int	2016-12-13T15:00:00	20161...	14	2	2	40
18	noiselevelavg	Average Noise Level 1-5	int	2016-12-13T16:00:00	20161...	15	2	2	40
18	noiselevelavg	Average Noise Level 1-5	int	2016-12-13T19:00:00	20161...	18	2	2	40
18	noiselevelavg	Average Noise Level 1-5	int	2016-12-13T20:00:00	20161...	19	2	2	40
18	noiselevelavg	Average Noise Level 1-5	int	2016-12-13T21:00:00	20161...	20	2	2	40
18	noiselevelavg	Average Noise Level 1-5	int	2016-12-13T22:00:00	20161...	21	2	2	40
18	noiselevelavg	Average Noise Level 1-5	int	2016-12-13T23:00:00	20161...	22	2	2	40
18	noiselevelavg	Average Noise Level 1-5	int	2016-12-14T00:00:00	20161...	23	2	2	39



Heronviewer sensor #18 (nu #62) geluids historie van dag 20161213

Effect 5 minuten kerkklok op uurgemiddelde



## Volunteering in Smartemission network Nijmegen Netherlands

by GreenFrogg | December 14, 2016 20:57 | 154 views | 0 comments | shortlink

<http://smartemission.ruhosting.nl/publications/> The pilot experimental project "Smart Emission" sensor-network in the city of Nijmegen. This project, as part of research program 'Maps 4 Soc Smart City projects in the Netherlands. A number of social, technical and governmental innovative sensing method: new, low-cost sensors are being designed and built in the project sensing-modules that measure air quality indicators, amongst others NO2, CO2, ozone, temp measured data forms a refined data-flow from sensing points at places where people live and a real-time, in-depth understanding of the local distribution of urban air quality (3) empowering 'externality' of urban air quality and feeding this into a bottom-up planning process: co-interpr and collectively explore possible options for improvement to get a fair and 'better' distribution is based on the philosophy of 'bottom up urban planning,' from local places to city-govermmer practice can benefit from seizing the opportunity of enabling technologic capacities and advar

# Www.publiclab.org

[plots-airquality] Smartemission citizen project Nijmegen Netherlands  
aan: Frits Ogg hccnet

Liz Barry  
15-12-2016

oh interesting, can you send that to the whole list?

--

+1 336-269-1539...

[plots-airquality] Smartemission citizen project Nijmegen Netherlands  
aan: Liz Barry

Frits Ogg hccnet  
15-12-2016

Liz,

[http://www.intemo.com/en/products/case\\_histories/outsidensors/](http://www.intemo.com/en/products/case_histories/outsidensors/)

Frits...

[plots-airquality] Smartemission citizen project Nijmegen Netherlands  
aan: Frits Ogg hccnet, plots-airquality

Liz Barry  
15-12-2016

Hi Frits!

Which sensors is this project working with?

--...

Van Liz Barry <ebarry@gmail.com> ☆

Beantwo

Onderwerp **Re: [plots-airquality] Smartemission citizen project Nijmegen Netherlands**

Aan mij <fritsogg@gmail.com> ☆, plots-airquality <plots-airquality@googlegroups.com> ☆

Thanks Frits!

Hey everyone, see the link Frits sent about which sensors this project in the Netherlands is using: [http://www.intemo.com/en/products/case\\_histories/outsidensors/](http://www.intemo.com/en/products/case_histories/outsidensors/)

--